

non-invasive ecg from conscious rats & mice

smart tools - swift services - sharp research

a complete solution from **ecgTUNNEL** to report !

ecgTUNNEL houses subject

- tunnel gently and firmly restrains the subject
- mouse and rat models available
- each model accommodates neonate to adult subjects (interchangeable tunnels)
- 4 electrode pads for up to 6-lead ecg

setup adapted to your needs

- choice of wired or wireless setup
- wireless system based on **emkaPACK** transmitter and associated receiver
- wired setup uses ecg amplifier card
- acquire from up to 16 **ecgTUNNELS** simultaneously

acquisition and advanced ecg analysis

- acquisition in **iox**, ecg analysis in **ecgAUTO**
- beat-by-beat or average beat analysis
- single or multilead
- field-tested validated software

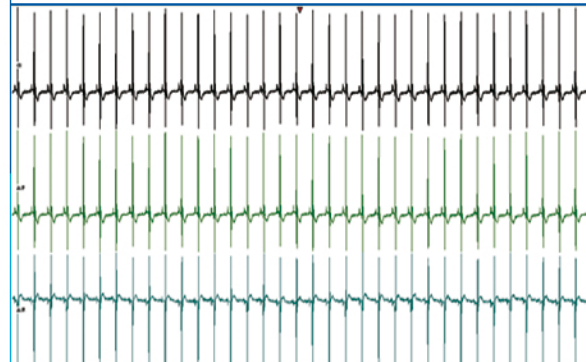
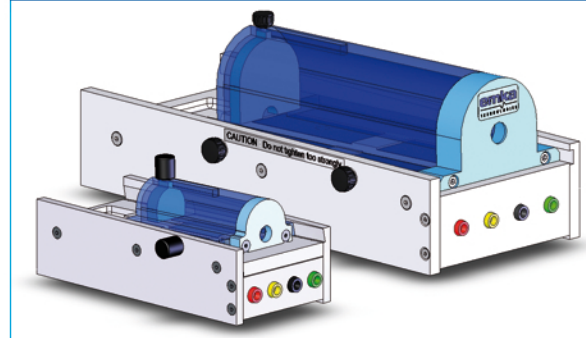
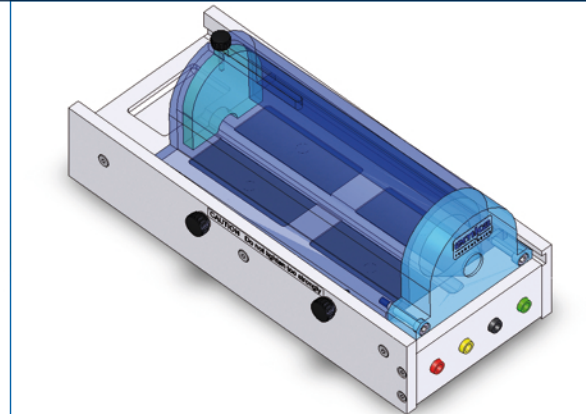
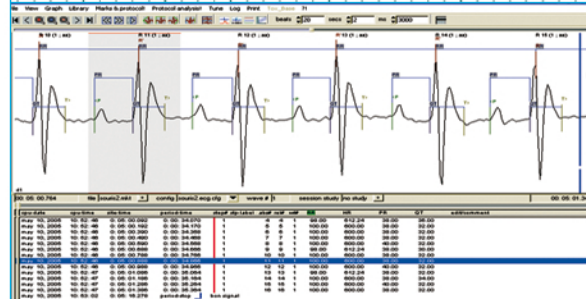
advantages

- no anesthetic and no surgery
- quick and easy setup
- rapid adaptation
- noninvasive ecg can also be obtained from sedated subjects (ie without tunnel)

“when compared to telemetry, this restrained ecg monitoring method shows a very good yield”

Mongue-Din et al (2007) Eur J Physiol 454:165-171

only from **emka** TECHNOLOGIES' the established leader for preclinical ecg analysis

Time	HR	PR	QT	QTc	QTd	QTn	QTm	QTs	QTl	QTf	QTg	QTa	QTb	QTc	QTd	QTn	QTm	QTs	QTl	QTf	QTg	QTa	QTb
00:00:00	350	100	100	100	100	100	100	100	100	100	100	100	100	100	100	100	100	100	100	100	100	100	100
00:00:01	350	100	100	100	100	100	100	100	100	100	100	100	100	100	100	100	100	100	100	100	100	100	100